



Key
T1: Oak

TPO293/2023

35 The Avenue, Sunbury-on-Thames, TW16 5HY



'Reproduced from the Ordnance Survey mapping with the permission of the Controller of her Majesty's Stationary Office (c) Crown Copyright. Unauthorised reproduction infringes Crown Copyright and may lead to prosecution or civil proceedings.'



Scale: 1:1,250

Date: 29 November 2023

TREE EVALUATION METHOD FOR PRESERVATION ORDERS ASSESSMENT

Surveyor: Stewart Bee Date: 29/11/23

Owner:

Location: Rear garden of 35 The Avenue

Tree species: T1 Oak

PART 1: AMENITY ASSESSMENT

A) Condition and suitability for TPO (NB: Refer to guidance note for definitions)

Score	Condition	Suitability	Notes
<u>5</u>	Good	Highly suitable	Oak appears healthy and stable and is showing no obvious sign of disease or decay
3	Fair	Suitable	
1	Poor	Unlikely to be suitable	
0	Unsafe	Unsuitable	
0	Dead	Unsuitable	

B) Remaining longevity and suitability for TPO (NB: Refer to 'Species guide in guidance note)

Score	Age	Suitability	Notes
5	100+	Highly suitable	Mature
<u>4</u>	40 -100	Very suitable	
2	20 - 40	Suitable	
1	10 – 20	Just suitable	
0	<10	Unsuitable	

C) Relative public visibility & suitability for TPO (NB: Consider future potential refer to guidance note)

Score	Visibility	Suitability	Notes
5	Very large or large trees that are prominent landscape features	Highly suitable	Upper crown is easily visible from The Avenue
<u>4</u>	Large/medium trees clearly visible to the public	Suitable	
3	Medium/larger trees with limited view only	Just suitable	
2	Small/larger trees visible only with difficulty	Unlikely to be suitable	
1	Trees that are not visible to the public, regardless of size	Probably unsuitable	

D) Other factors (NB: Trees must have accrued 7 or more points (no zeros) to qualify)

Score	Factor	Notes
5	Principal components of arboricultural features, or veteran trees	None
4	Members of groups of trees that are important for their cohesion	
3	Trees with significant historical or commemorative importance	
2	Trees of good form, especially if rare or unusual	
<u>1</u>	Trees with none of the above additional redeeming features	

PART 2: EXPEDIENCY ASSESSMENT (NB: Trees must have accrued 9 or more points to qualify)

Score	Expediency	Notes
5	Known threat to tree	House has recently been sold and a TPO request has been received by a concerned resident that the tree may be removed. Owner has mentioned to the Tree Officer that they might want to extend, but no details were currently available
3	Perceived threat to tree	
<u>2</u>	Reasonably foreseeable threat to tree	
1	Threat to tree not reasonably foreseeable	
0	Tree known to be an actionable nuisance	

PART 3: DECISION GUIDE

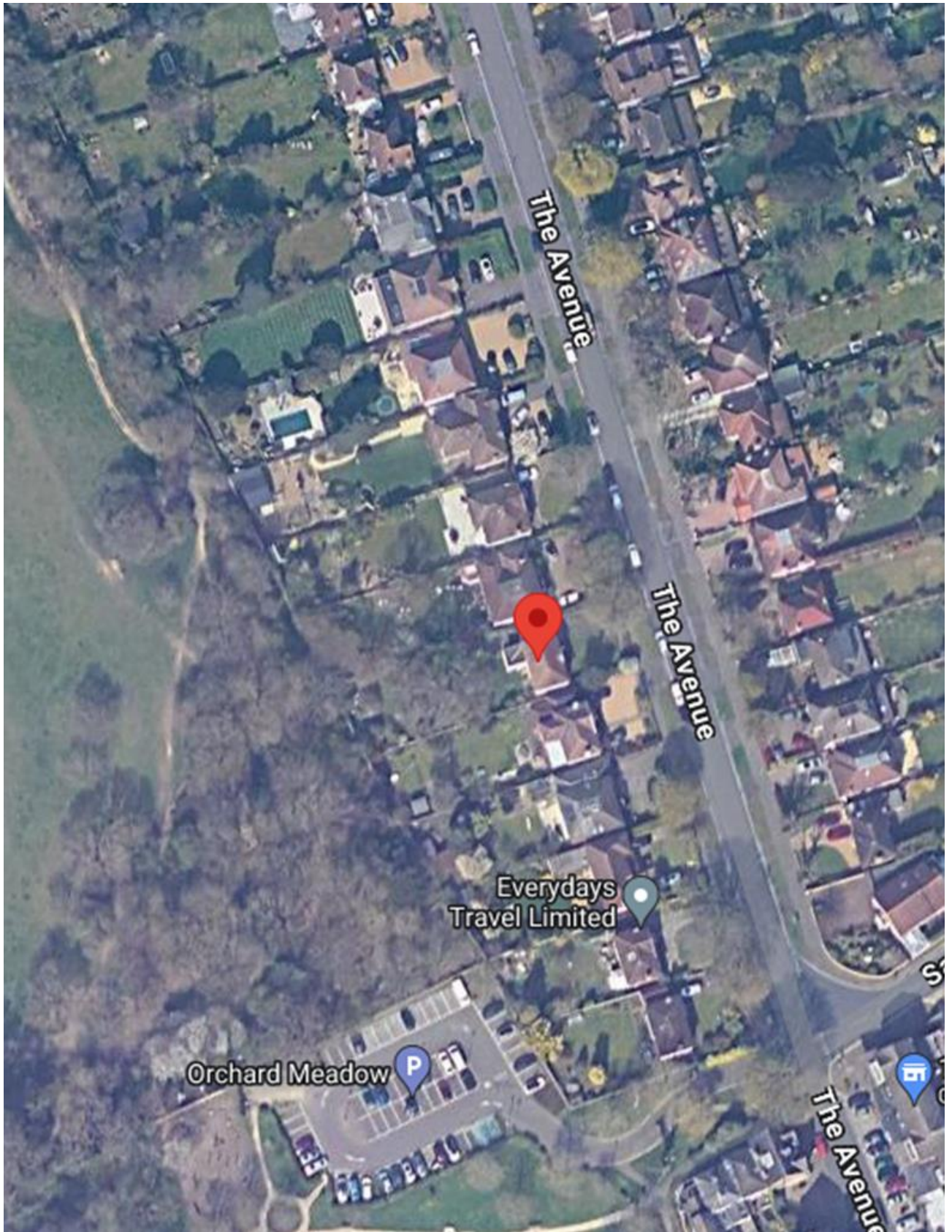
Score	TPO	Total	Decision
Any 0	Do not apply TPO	5+4+4+1+2=15	
1-10	Does not merit TPO		
11-13	Possibly merits TPO		
14+	Definitely merits TPO		

Sig 

FOR OFFICE USE ONLY:

TPO Reference No:	Tree Number	File Reference	Case officer

Aerial View



Site Visit Photo taken in March 2024



Google Maps photo taken in May 2021



View from Thames Street, Sunbury, taken in March 2024

